

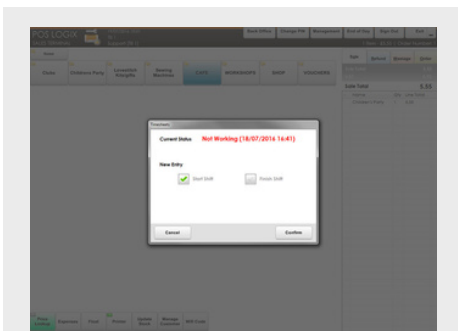
# POS Logix

## Cloud POS Software



### Key Features

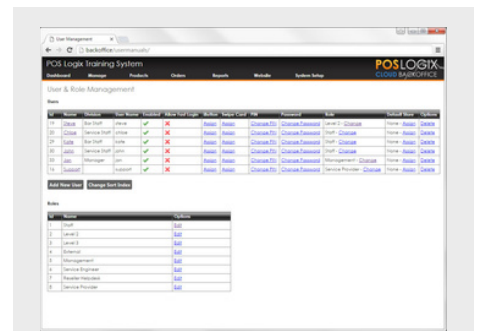
- Touch Screen Sales Terminal
- Online Accessible Back Office
- Great for Multi-Site Businesses
- Easy to Learn Interface
- Compatible Hardware
- Fully Customisable
- End-to-End Tracking
- Online Management
- Online Reporting
- Integrated Card Payments
- Inventory Management
- Scheduled Special Offers
- Time & Attendance
- Stock Control
- Customer Database
- Customer Subscriptions
- Caller ID & Postcode Lookup
- Customer Tabs & Accounts
- Biometrics Authentication
- Secure Functions using SSL
- Cloud-based Back Office



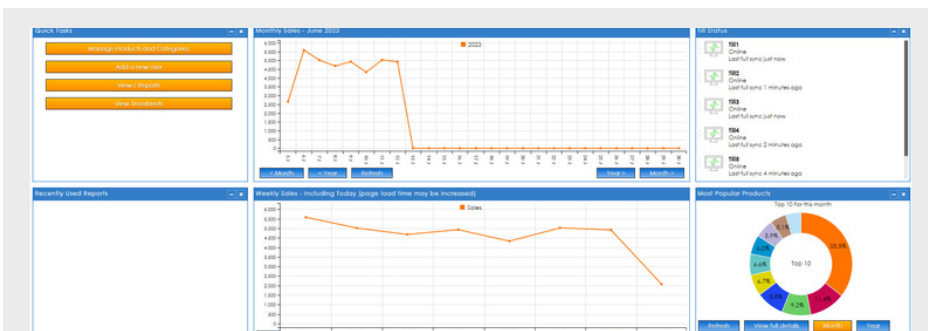
**Secure Staff Member Sign On**  
Fully supports fingerprint user authentication and enrolment.



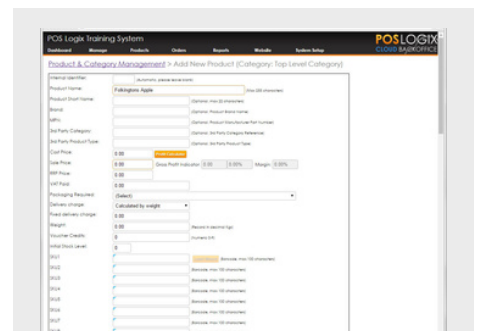
**Flexible Menu Design**  
Change buttons, add images, add exclusions and condiments.



**Cloud-Based Back Office**  
Access your Back Office securely from anywhere using a browser.



**Comprehensive Reporting**  
The Back Office software features an in-depth reporting facility, giving you access to the data you need in just a few clicks. The Reports can be run against data gathered from your EPOS Sales Terminals or E-Commerce system. Reports can be viewed in your browser or can also be exported CSV and Excel XLS files.



**Products & Categories**  
Organise your products into a category structure making it quick and easy for staff to locate them. Categories appear on your EPOS like on your website.

### Industry Specific Solutions



Retail



Bar & Restaurant



Coffee Shops



Bakery



Hotel